



Rotoshear[®] EZ-CARE[™]

Internally-Fed Rotating Drum Screen

- Higher capture rates, better product recovery
- Custom designs for municipal WWTPs and industrial applications
- Application experience (over 1,000 units sold)
- Quality, robust design with installations over 30 years old
- First and only "Periodic Maintenance-Free" rotating drum screen

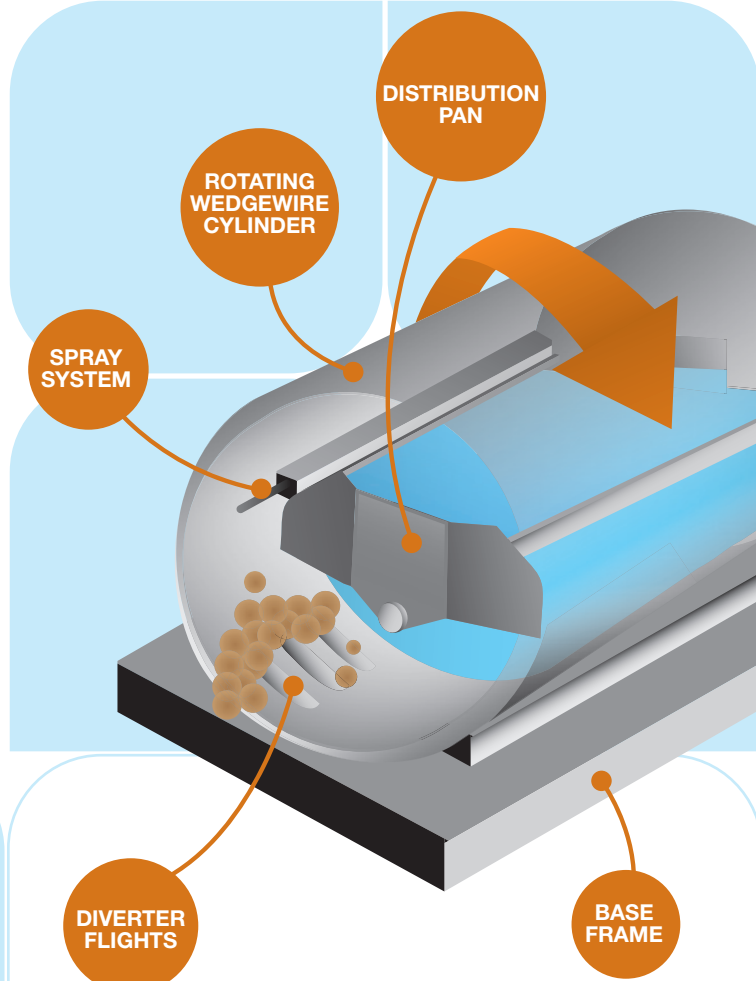


What is the Rotoshear® EZ-CARE™?

The Rotoshear® screen is a high capacity, self-cleaning, fine screen that uses wedgewire media to separate solids from liquid streams. It was developed over three decades ago and it has been continually updated with new design enhancements. The “EZ-CARE” upgrade makes the Rotoshear® the first and only “Periodic Maintenance-Free” rotating drum screen in the market. There are ten models available with many application-specific custom features.

How does Rotoshear® EZ-CARE™ work?

Rotoshear® EZ-CARE™ unit is an internally-fed rotary wedgewire cylindrical screen that operates with minimal attendance. Influent enters through the inlet pipe and flows into a headbox. The headbox fills and the influent cascades over the weirs and contacts two sides of the rotating cylinder screen. As the influent hits the turning screen, the solids are caught inside the cylinder and the liquid passes through the screen into the process or on for further treatment. Diverters on the cylinder move the solids along the length of the screen to discharge. The unit is equipped with spray bar(s) to clean the screen.



Rotoshear® EZ-CARE™ applications

Municipal

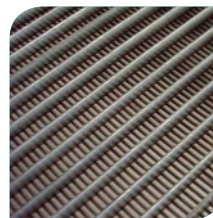
- Pretreatment at wastewater treatment plants
- Pre-membrane screening
- Fine screening in lieu of primary clarification
- Sludge screening (RAS / WAS / Combined)
- Scum and grease screening
- Final effluent screening

Industrial

- Meat Processing
- Poultry
- Fruit and vegetable processing
- Beverage (wine, beer, other)
- Pulp and paper
- Tanneries
- Plastics recycling
- Petrochemicals

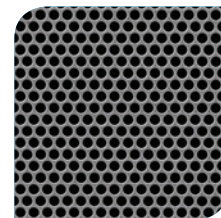
Available screen media types

Rotoshear®



Wedgewire
0.010" to 0.100"

Rotoshear® PF



Perforated Panels
1mm or 2mm

Rotomesh



Wiremesh
200µm to 1000µm



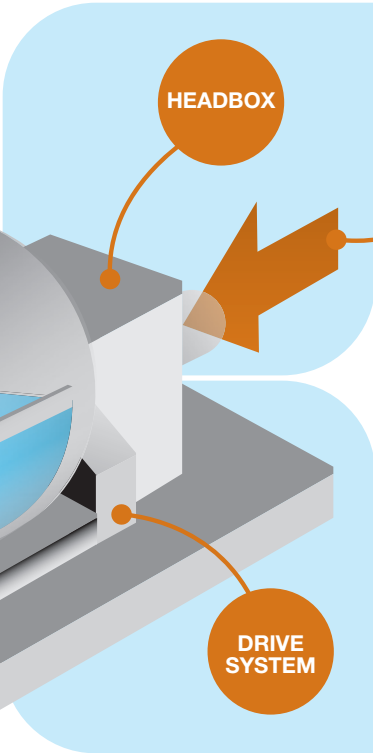
Why use rotary drum screens instead of other screens?

In Municipal Applications:

- High capacity, high capture rate
- Eliminate costly primary clarifiers
- Cleanest WWTPs are designed with rotating drum screens
- Eliminate the risk of bypass associated with other screen types
- Totally enclosed (minimizes odors)
- Eliminate costly channels

In Industrial Applications:

- High product recovery
- Self-cleaning
- Minimal downtime and maintenance
- Simple operation
- Finer openings



Maintenance Savings

Typical Maintenance Requirements of Rotating Drum Screens

Periodic Maintenance Item	Rotoshear® EZ-CARE™	Competitor's Design*	20 Year Savings**
Drive System	None	Daily	\$75,000
Trunnion Wheels	None	Weekly	\$60,000
Stabilizer Pads / Wheels	None	Weekly	\$30,000

* Different manufacturers require different periodic maintenance per IOMs. Other manufacturers' requirements are selected based on the commonality.

** Maintenance savings include labor and lubricant costs. Labor cost is assumed as \$25.00 an hour. These numbers are subject to change per application.

Rotoshear® EZ-CARE™ screen dimensions (in inches)

Model	Length	Width	Height	Hp (kW)
HRS2448DV	91½	50½	41½	½ (.37)
HRS3648DV	95	58½	53½	½ (.37)
HRS3672DV	119	58½	53½	½ (.37)
HRS4860	145	84	66	1
HRS4872	160	84	66	1
HRS6072DV	145	92	81	1 (.75)
HRS6096DV	174	92	81	1½ (1.11)
HRS60120DV	194½	92	81	2 (1.5)
HRS60160DV	235¾	92	81	2 (1.5)
HRS80160	251	114	107	5 (3.8)



Features and benefits: designed with the operator in mind!



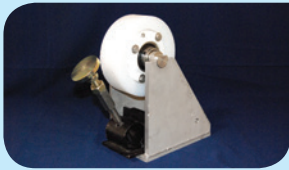
The Rotoshear® EZ-CARE™ screen is built for high capacity

The Rotoshear® EZ-CARE™ has application-specific custom headbox designs which were developed over the years with application experience. While the headbox design maximizes the capacity, it ensures the dryness of the captured solids.



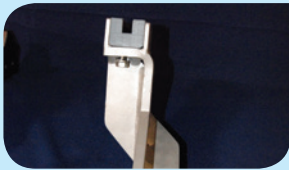
Lube-free drive system (patent pending)

The Rotoshear® EZ-CARE™ utilizes reliable chain and sprocket coupling to rotate the screen cylinder. The hybrid design drive system's wear factor is so low the drive system runs for years without any lubrication.



Lube-free trunnion wheels (patent pending) (optional)

The Rotoshear® EZ-CARE™ is applying a patented lubrication technology to the wastewater treatment industry. The self-lubricating polymeric components are heat processed into the wheel bearings. Using the patented technology eliminates the need for periodic external lubrication and acts as a secondary seal mechanism extending the life of the trunnion wheel bearings. In addition, the new trunnion wheel bracket permits the operator to replace the trunnion wheels within minutes minimizing any downtime.



Lube-free stabilizer pads (patent pending) (optional)

It is very important to keep the screen cylinder stabilized for optimum performance of the screen. Some designs utilize stabilizing wheels or pads which require lubrication. The Rotoshear® EZ-CARE™ places the stabilizer pad at a very convenient location for ease of inspection. Its unique design eliminates the need for lubrication.



Special drum design maximizes capture

The Rotoshear® EZ-CARE™ screen is constructed of quality stainless steel wedgewire, perforated panels or woven wiremesh which are recognized for their ability to handle stringy fibers and greasy solids.



Automatic spray system with quick disconnect nozzles

The Rotoshear® unit has two separate spray systems: an internal spray to clean the screening surface of the cylinder, and an external spray system to keep the screen openings clear. The spray system is designed for easy nozzle cleaning.



Fast, easy installation

Rotoshear® EZ-CARE™ units are shipped assembled – only piping, power and water require on-site connections. Rotoshear® EZ-CARE™ screens can have custom options such as flanges, support legs, and drain pans to make the unit free standing, and end enclosures are available to control odors.



Fort Lauderdale
Chicago
Kansas City
Denver
Dubai

1.888.PARKSON
technology@parkson.com
www.parkson.com

